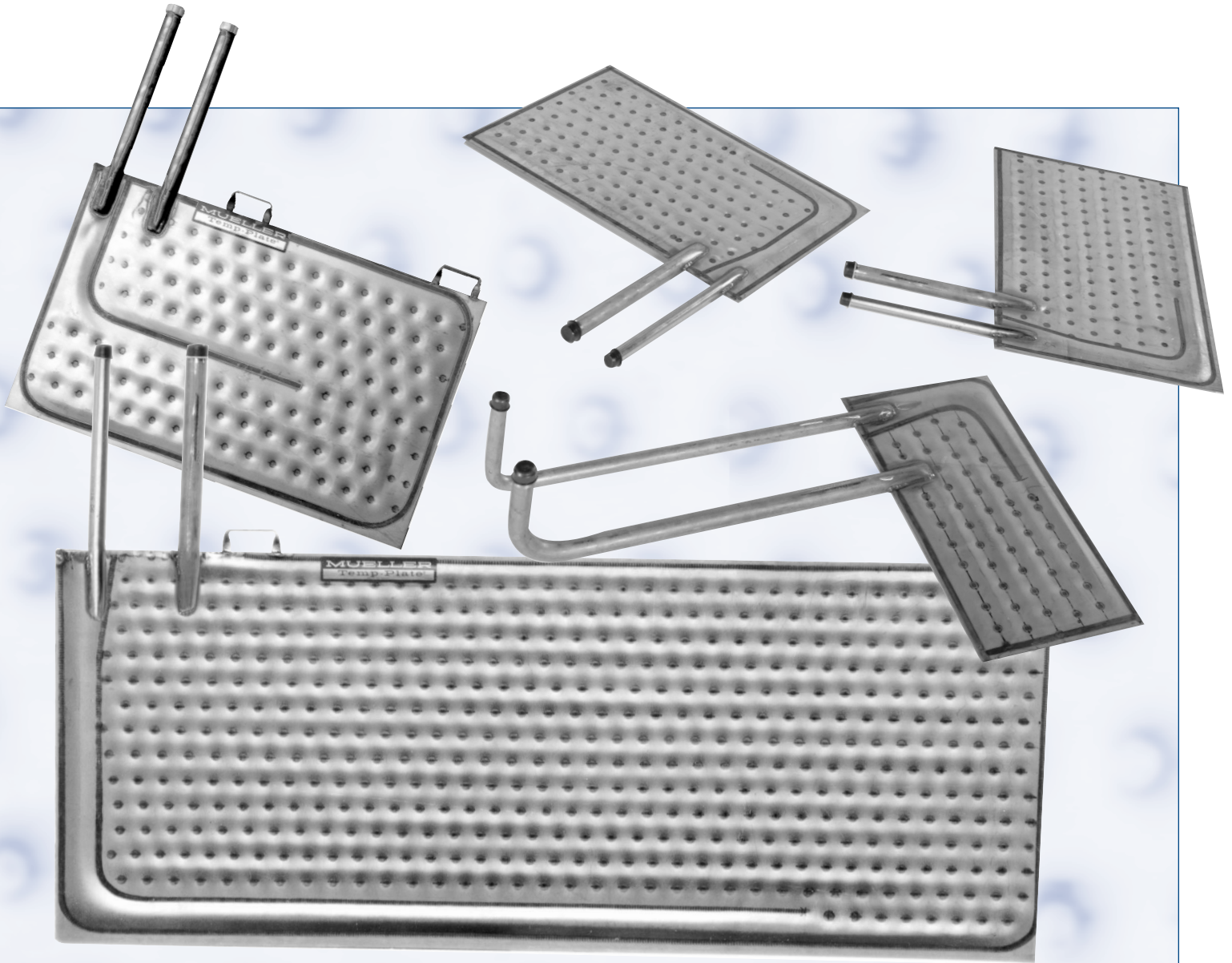


TEMP-PLATE® HEAT TRANSFER IMMERSION SECTIONS For the Metal Finishing Industry

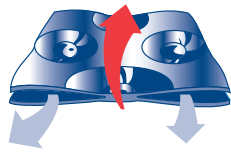


MUELLER®

HEAT TRANSFER PRODUCTS

Mueller® Temp-Plate® Designs Maximize Heating/Cooling Efficiency

Whether it be immersion sections, shell sections, troughs, or clamps, Mueller has a Temp-Plate for your application. Three surface styles—single embossed, double embossed, and dimpled—offer versatile application and optimum heating/cooling efficiency. Steam, water, refrigerants, ammonia... whatever your transfer medium, you can count on our easy-to-clean dimpled or patented inflated designs to maximize your heat transfer dollar.



Unique Temp-Plate Design Reduces Condensate Build-Up

Mueller inflated design reduces condensate build-up common with typical “header” and “multiple header” die-formed embossed plate heat exchangers.

Free-Flow Pattern Reduces “Fatigue Failure” Due to Condensate Build-Up

By utilizing Mueller’s patented Temp-Plate inflated immersion sections, you can reduce “fatigue failure” caused by condensate build-up and problems common to conventional pre-formed heat transfer surfaces.

Built-In Performance and Craftsmanship

Mueller Temp-Plate immersion sections are backed by manufacturing experience, quality craftsmanship, constant testing and improvements, and proven customer satisfaction. Whatever the industry, our units have proven to be the most versatile, dependable and economical heat transfer sections available.

Price and Delivery

Save time and money as Mueller’s rapid order processing speeds your Temp-Plate immersion section to you in the fastest possible time.

Wide Variety of Designs and Materials Immediately Available

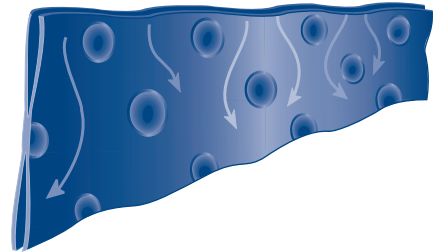
Our wide variety of designs and materials are available in mill, electropolished, and machine polished finishes. Materials include stainless steel, carbon steel, and other alloys, in many gauges and working pressures. In addition to the variety of sizes carried in stock, Mueller can fabricate special sizes to order. Sizes of Temp-Plate required for specific heating applications can be calculated from the charts supplied. Temp-Plate is interchangeable with die-formed embossed plate heat exchangers when specified.

**Double embossed only.*

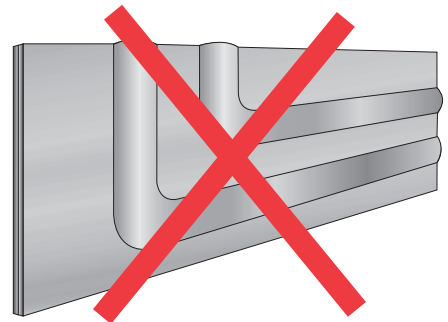
APPLICATIONS

- Chromate Systems
- Anodizing Systems
- Machine Tool Coolant Systems
- Plating Systems
- Industrial Parts Washers
- Phosphate Cleaning Systems

MUELLER TEMP-PLATE SURFACE



CONVENTIONAL SURFACE

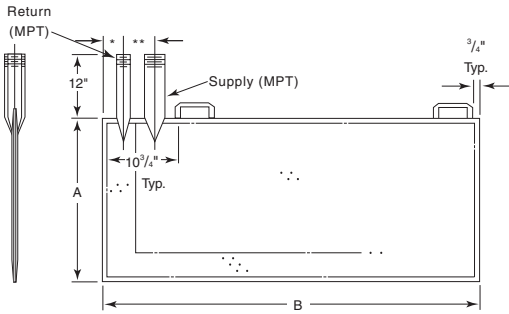


PIPE OR COUPLING SIZES

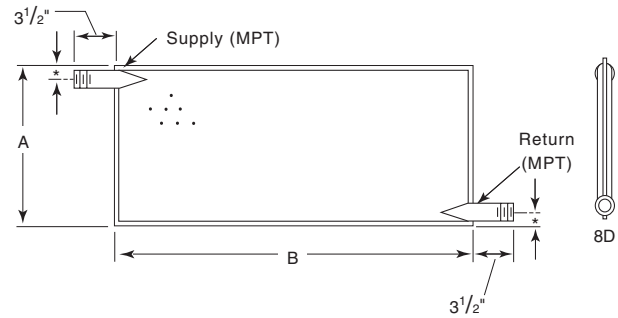
Temp-Plate Size		Type 7 & 9		Type 8	Type 5 & 6
Pipe or Coupling Sizes*		Supply	Return	Supply & Return	Supply & Return
Width	Up to 17"	1"	3/4"	1"	3/4"
Length	All Lengths				
Width	18" thru 25"	1"	3/4"	1"	3/4"
Length	Thru 47" Long				
Width	18" thru 25"	1 1/2"	3/4"	1 1/2"	3/4"
Length	Over 47" Long				
Width	26" thru 47"	2"	1"	2"	1"
Length	All Lengths				

Styles and Sizes of Temp-Plate

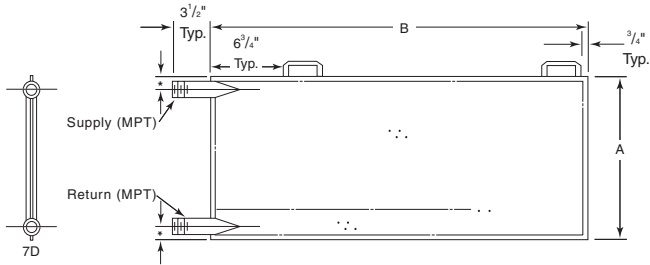
STANDARD DESIGN — TYPE 9D



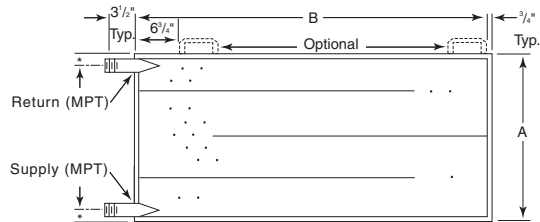
STANDARD DESIGN — TYPE 8D



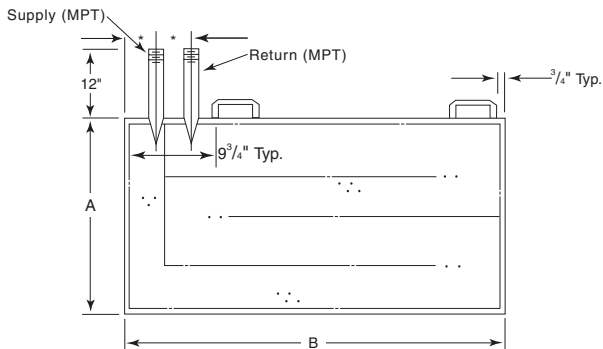
STANDARD DESIGN — TYPE 7D



STANDARD DESIGN — TYPE 6D



STANDARD DESIGN — TYPE 5D



STANDARD SIZE* AND WEIGHT CHART

Nominal Width in Inches	Length in Inches											
	23	29	35	47	59	71	83	95	107	119	131	143
12	12	15	10	25	32	38	44	51	57	64	70	76
24	26	34	41	55	68	83	97	111	125	139	155	167
36	37	47	57	77	96	116	136	157	176	196	216	235
48	54	65	78	103	128	153	178	203	228	254	279	304

NOTE: Weights (approx.) in pounds based on No. 14 gauge; for No. 16 gauge multiply by .8 or for No. 12 gauge multiply by 1.4.
*Custom sizes available.

HEAT TRANSFER AREAS (All styles in square feet. Larger sizes available.)

Nominal Width Inches	Length in Inches																
	18	23	29	35	47	59	71	83	95	107	119	131	143	155	167	179	191
12	3.1	3.9	5.0	6.0	8.1	10.1	12.2	14.2	16.3	18.4	20.4	22.5	24.5	26.6	28.7	30.7	32.8
24		7.9	10.0	12.0	16.1	20.3	24.4	28.5	32.6	36.7	40.9	45.0	49.1	53.2	57.3	61.5	65.6
36				18.0	24.2	30.4	36.6	42.7	48.9	55.1	61.3	67.5	73.6	79.8	86.0	92.2	98.4
48					32.3	40.5	48.8	57.0	65.2	73.5	81.7	90.0	98.2	106.4	114.7	122.9	131.2

STYLES AND SIZES OF TEMP-PLATE—Continued

TEMP-PLATE SIZE/STYLES 7, 8, AND 9 FOR STEAM APPLICATIONS

PSI	Temp. °F	Heating water from 60°F in one hour using steam	Width Length	12"			24"						36"										
				29"	35"	47"	29"	35"	47"	59"	71"	83"	95"	35"	47"	59"	71"	83"	95"	107"	119"	131"	143"
15	160	Btuh x 1,000		104	124	166	207	249	334	421	506	591	676	373	502	630	759	886	1014	1143	1271	1400	1526
15	160	Gal. Water/Hr		124	149	199	249	298	400	505	607	709	811	448	602	756	910	1062	1216	1370	1524	1679	1830
15	160	Condensate - #/Hr		110	132	176	219	263	353	446	535	625	715	395	531	667	803	937	1073	1209	1345	1481	1615
15	180	Btuh x 1,000		93	111	149	186	224	300	378	455	531	607	335	451	566	682	796	911	1027	1142	1258	1371
15	180	Gal. Water/Hr		93	111	149	223	268	360	453	545	637	728	402	541	679	818	954	1092	1231	1369	1508	1644
15	180	Condensate - #/Hr		99	118	158	197	237	317	400	481	562	643	355	477	599	722	842	964	1086	1209	1331	1451
15	200	Btuh x 1,000		81	97	130	163	195	262	330	397	463	530	293	393	494	595	694	795	896	997	1098	1197
15	200	Gal. Water/Hr		70	84	111	195	234	314	396	476	556	636	351	472	593	714	832	953	1074	1195	1316	1435
15	200	Condensate - #/Hr		86	103	138	172	206	277	349	420	490	561	310	416	523	630	735	841	948	1055	1161	1266
25	160	Btuh x 1,000		117	141	188	235	282	378	477	573	669	766	423	568	714	859	1003	1148	1294	1439	1585	1728
25	160	Gal. Water/Hr		141	169	226	282	338	453	572	687	802	918	507	681	856	1031	1202	1377	1551	1726	1901	2072
25	160	Condensate - #/Hr		126	151	201	251	302	405	510	613	717	820	453	608	764	920	1074	1229	1385	1541	1697	1850
25	180	Btuh x 1,000		107	129	172	215	257	345	435	523	611	699	386	519	652	785	916	1049	1182	1315	1448	1579
25	180	Gal. Water/Hr		107	129	172	257	309	414	522	628	733	839	463	622	782	941	1098	1258	1417	1577	1736	1893
25	180	Condensate - #/Hr		114	138	184	230	276	370	466	560	655	749	413	556	698	841	981	1123	1266	1408	1550	1690
25	200	Btuh x 1,000		96	115	154	192	231	310	390	469	548	627	346	465	585	704	821	941	1060	1179	1298	1416
25	200	Gal. Water/Hr		82	99	132	231	277	371	468	563	657	752	415	558	701	844	985	1128	1271	1414	1557	1698
25	200	Condensate - #/Hr		103	124	165	206	247	332	418	503	587	671	371	498	626	754	879	1007	1135	1262	1390	1516
50	160	Btuh x 1,000		142	171	228	284	341	458	577	694	811	927	512	688	865	1041	1214	1391	1567	1744	1920	2093
50	160	Gal. Water/Hr		171	205	273	341	409	549	692	832	972	1112	614	825	1037	1248	1456	1668	1879	2091	2302	2510
50	160	Condensate - #/Hr		156	187	249	312	374	502	633	761	889	1017	561	755	948	1141	1332	1525	1718	1912	2105	2295
50	180	Btuh x 1,000		133	159	212	265	318	427	538	647	755	864	477	641	806	970	1132	1296	1460	1625	1789	1951
50	180	Gal. Water/Hr		133	159	212	318	381	512	645	775	906	1036	572	769	966	1163	1357	1554	1751	1948	2145	2339
50	180	Condensate - #/Hr		145	174	232	291	349	468	590	709	828	947	523	703	884	1064	1241	1421	1601	1782	1962	2139
50	200	Btuh x 1,000		122	147	196	245	294	394	497	597	697	797	440	592	744	895	1044	1196	1348	1499	1651	1800
50	200	Gal. Water/Hr		105	126	168	293	352	472	595	716	836	956	528	710	892	1073	1252	1434	1616	1798	1980	2158
50	200	Condensate - #/Hr		134	161	214	268	322	432	544	654	764	874	483	649	815	982	1145	1311	1478	1644	1810	1974
100	160	Btuh x 1,000		174	209	278	348	417	560	706	848	991	1133	626	841	1057	1272	1485	1700	1916	2131	2347	2559
100	160	Gal. Water/Hr		209	250	334	417	500	671	846	1017	1188	1359	750	1009	1267	1526	1780	2038	2297	2555	2814	3068
100	160	Condensate - #/Hr		197	237	316	395	474	635	801	963	1125	1286	710	955	1200	1444	1685	1930	2174	2419	2664	2904
100	180	Btuh x 1,000		165	196	263	329	395	530	668	803	938	1073	593	797	1001	1205	1406	1610	1814	2018	2222	2423
100	180	Gal. Water/Hr		165	196	263	395	474	636	801	963	1125	1287	711	955	1200	1445	1686	1930	2175	2420	2665	2905
100	180	Condensate - #/Hr		187	224	299	374	448	602	759	912	1065	1218	673	904	1136	1368	1596	1827	2059	2291	2522	2750
100	200	Btuh x 1,000		155	186	248	310	372	499	629	756	883	1010	558	750	942	1134	1323	1515	1707	1899	2091	2280
100	200	Gal. Water/Hr		133	159	213	372	446	598	754	907	1059	1211	669	899	1129	1360	1586	1817	2047	2277	2508	2734
100	200	Condensate - #/Hr		176	211	281	352	422	566	714	858	1002	1147	633	851	1069	1287	1502	1720	1938	2156	2374	2588
(u=155)		Area-Approx. Square Feet		5.0	6.0	8.0	10.0	12.0	16.1	20.3	24.4	28.5	32.6	18.0	24.2	30.4	36.6	42.7	48.9	55.1	61.3	67.5	73.6

Come see us at temp-plate.com for all your heat transfer needs!

Price and Delivery

Save time and money as Mueller's rapid order processing speeds your Temp-Plate immersion section to you in the fastest possible time.



P.O. Box 828 • Springfield, Missouri 65801-0828, U.S.A.
 Phone: (417) 831-3000 • 1-800-MUELLER • Fax: (417) 575-9885
www.muel.com • E-mail: heattrans@muel.com
 International Inquiries • Fax: (417) 831-6906 • E-mail: international@muel.com

Mueller offers a Temp-Plate manual (TP-108) featuring technical data on Mueller Temp-Plate heat transfer surfaces. Material gauges, material properties (standard and ASME working pressures), problems of corrosion, and many points in between are featured. Call for your copy today.

